

ONIX

ASIC Prototyping Platforms



ONIX-JTAG-EXP User Guide

Version 0.1

For Raytho

only

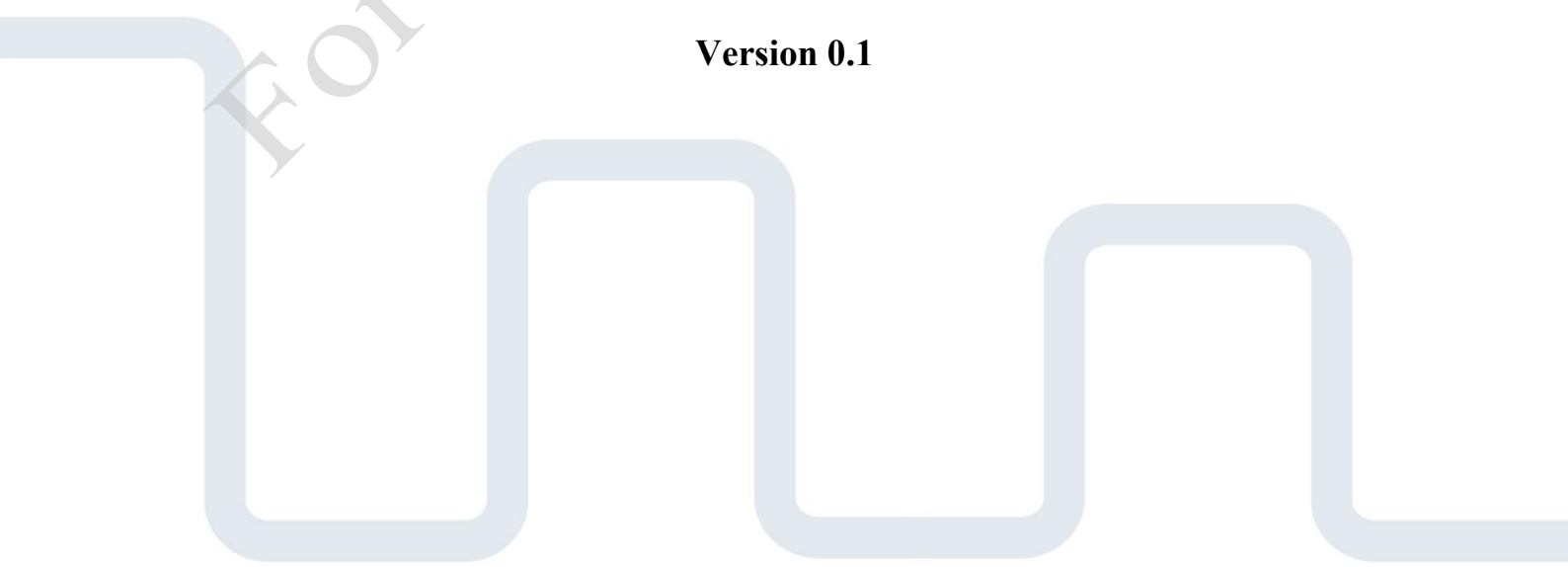


Table of Contents

1.	REVISION HISTORY	3
2.	AVT-ONIX-JTAG-EXP FEATURES	4
2.1.	OVERVIEW	4
2.2.	BLOCK DIAGRAM.....	4
2.3.	BOARD FEATURES.....	5
2.4.	FEATURE DESCRIPTIONS	5
3.	BOARD SPECIFICATIONS	6
3.1.	BOARD DIMENSIONS	6
4.	ORDER INFORMATION	7
4.1.	PARTS	7
4.2.	RELATED PRODUCTS.....	7

Table of Figures

Figure 1 - AVT-ONIX-JTAG-EXP Block Diagram	4
Figure 2 - AVT-ONIX-JTAG-EXP – Top Board Components	5
Figure 3 - Board Dimensions	6

Tables

Table 1 – Revision History.....	3
Table 2 - AVT-ONIX-JTAG-EXP Component Descriptions	5

1. Revision History

The following table shows the revision history for this document.

Author / Company	Description	Revision	Date
ONIX D.T Ltd	Initial ONIX release	0.1	13/7/16

Table 1 – Revision History

For Raytheon use only

2. AVT-ONIX-JTAG-EXP Features

2.1. Overview

This document provides information regarding the AVT-ONIX-JTAG-EXP board. The board main purpose is to cascade 3 JTAG interfaces derived from a Digilent module. Each unused JTAG port can be by-passed by adding a “Jumper” near the JTAG header (JPD1-JPD3).

2.2. Block Diagram

The AVT-ONIX-JTAG-EXP board block diagram shown in Figure 1.

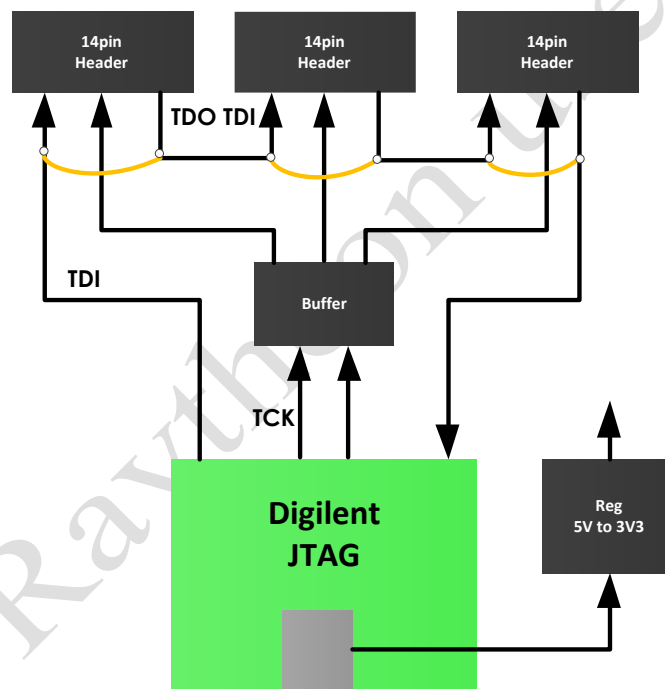


Figure 1 - AVT-ONIX-JTAG-EXP Block Diagram

2.3. Board Features

- 100% compatible with Xilinx Vivado, ISE & SDK
- SW Drivers already integrated into Xilinx installation
- 100% compatible with Xilinx JTAG connectors
- Cascading few boards into a single cable

2.4. Feature Descriptions

The following figure shows the AVT-ONIX-JTAG-EXP board. Each numbered feature that is referenced on the next 2 figures is described on the next table.

ID	RefDes	Component Description
1	JD4	USB connector for Digilent Module
2	UD2	Digilent Module
3-5	JD1-JD3	14-pin Xilinx JTAG header
6-8	JPD1-JPD3	Bypass jumper for unused JTAG port

Table 2 - AVT-ONIX-JTAG-EXP Component Descriptions

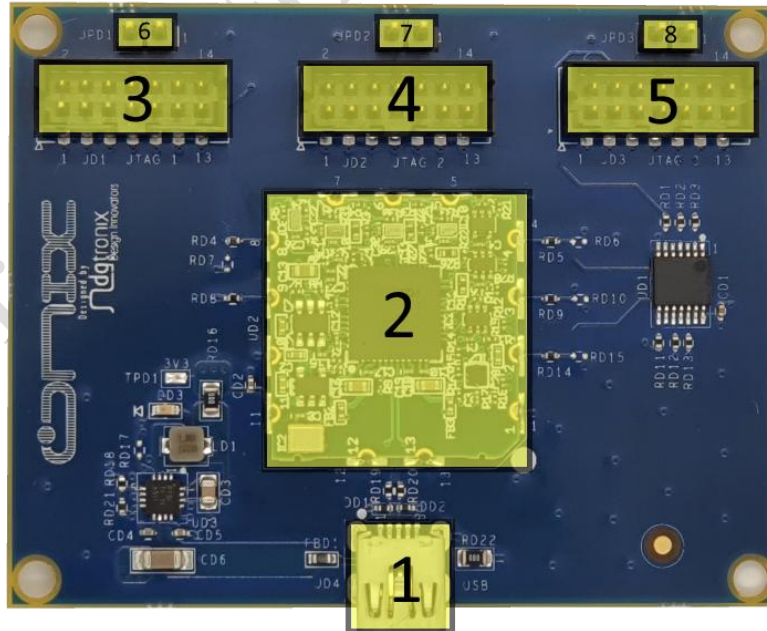


Figure 2 - AVT-ONIX-JTAG-EXP – Top Board Components

3. Board Specifications

3.1. Board Dimensions

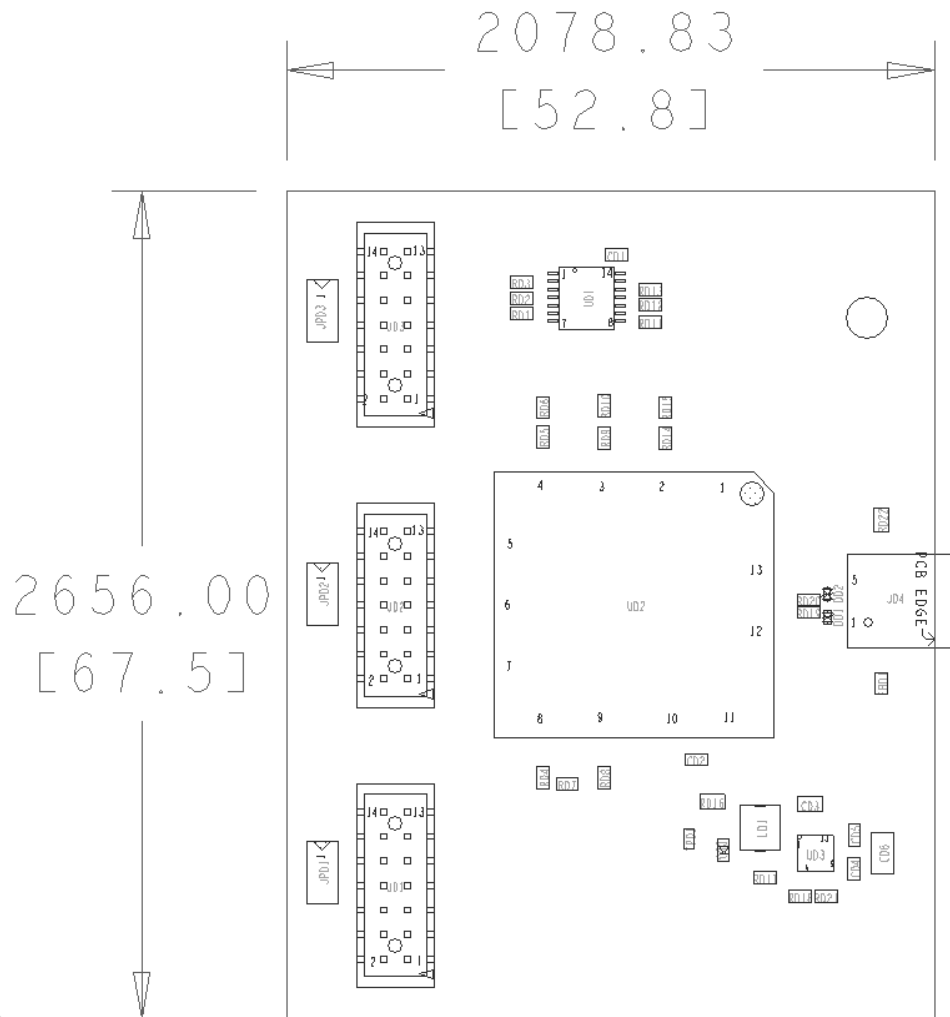


Figure 3 - Board Dimensions

Notes:

1. All dimensions are in mils [millimeters]
2. The dimensional diagram is for reference only

4. Order Information

4.1. Parts

Part Number	Description	Price
AVT-ONIX-JTAG-EXP	PXIE to IPASS 8x Lanes	Contact your local distributor

4.2. Related Products

Part Number	Description	Price
AVT-ONIX-VU440-1	ONIX Module XCVU440 -1 Device	Contact your local distributor
AVT-ONIX-VU440-2	ONIX Module XCVU440 -2 Device	Contact your local distributor
AVT-ONIX-PCIE-IPASS-8X-G	PCI Express to IPASS 8x module	Contact your local distributor
AVT-ONIX-KIT-IPASS-8X-G	PCI Express over Cable	Contact your local distributor

*For more info <http://www.onix.systems>